

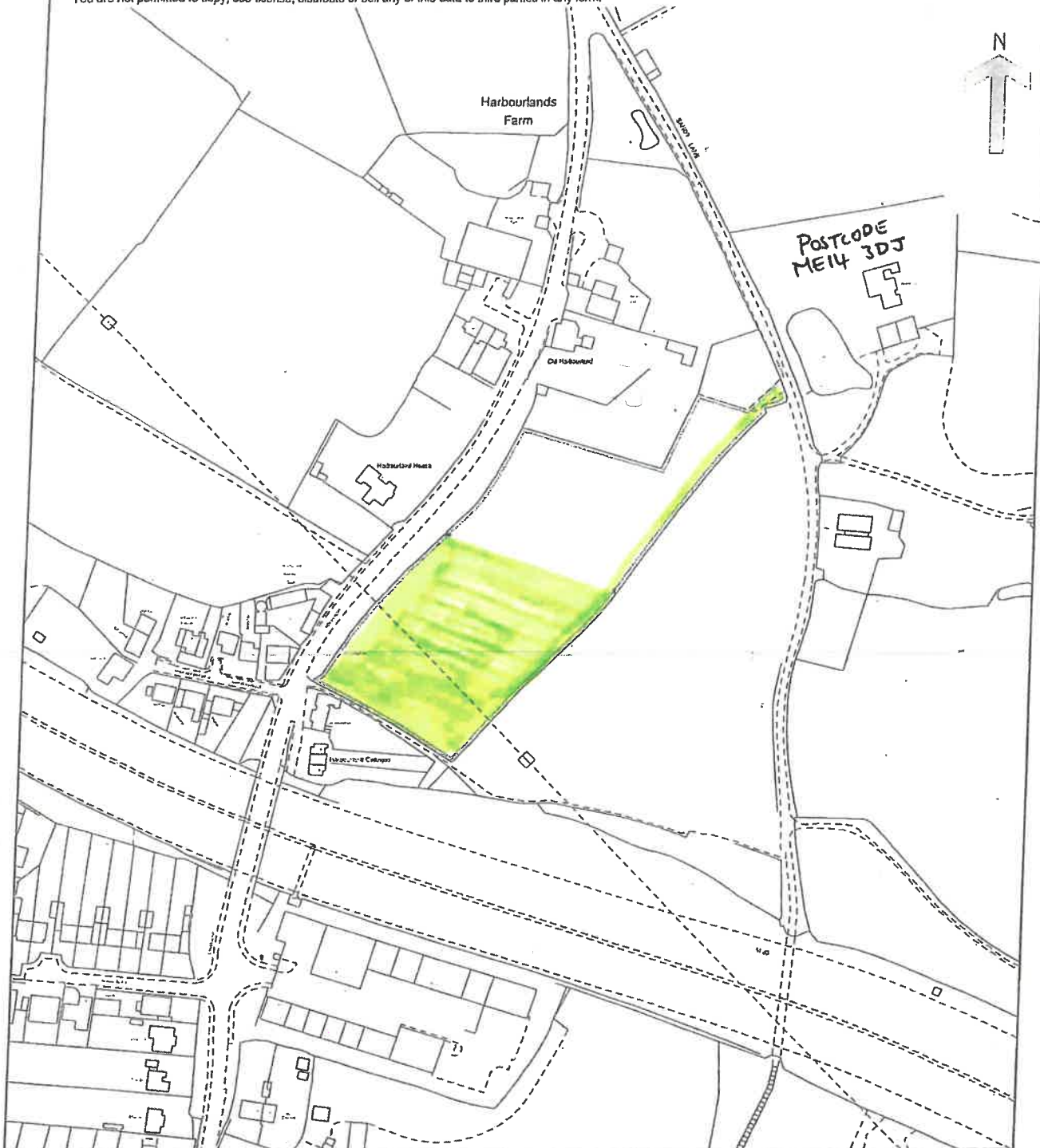
Land Registry
Official copy of
title plan

Title number TT5041
Ordnance Survey map reference TQ7757NW
Scale 1:2500
Administrative area Kent: Maidstone



© Crown copyright and database rights 2012 Ordnance Survey 100026316.
You are not permitted to copy, sub-license, distribute or sell any of this data to third parties in any form.

- BOXLEY PARISH
COUNCIL LAND.



This official copy issued on 27 June 2012 shows the state of this title plan on 27 June 2012 at 15:18:35. It is admissible in evidence to the same extent as the original (s.67 Land Registration Act 2002).

This title plan shows the general position, not the exact line, of the boundaries. It may be subject to distortions in scale. Measurements scaled from this plan may not match measurements between the same points on the ground. See Land Registry Public Guide 19 - Title Plans and Boundaries.

This title is dealt with by Land Registry, Nottingham Office.