



**Boxley**  
PARISH COUNCIL

[www.boxleyparishcouncil.org.uk](http://www.boxleyparishcouncil.org.uk)

Beechen Hall, Wildfell Close,  
Walderslade, Chatham, Kent. ME5 9RU

☎ 01634 861237

✉ [clerk@boxleyparishcouncil.org.uk](mailto:clerk@boxleyparishcouncil.org.uk)

**Stop 2,000+ houses being built on your doorstep!**

**MAIDSTONE BOROUGH COUNCIL'S PUBLIC CONSULTATION CLOSES ON  
THE 12 DECEMBER 2021 – ACT NOW!**

This is your last chance to stop 2000+ houses being built on greenfield land between Lordswood and Hempstead. These developments will obliterate the 'protected' strategic gap between Medway and Maidstone and will join Lordswood/Princes Park/Walderslade and Hempstead into one big urban sprawl

Maidstone Borough Council have by 26 votes to 23 put the 2000+ house development at Lidsing into the Local Plan. Your 3 local Borough Councillors all objected. The Local Plan must now be put to a Government inspector and unless enough valid planning objections are submitted, the Secretary of State is likely to approve it and it will be built. This is the last chance to save the open space which includes Capstone Valley and protect Boxley Parish from the resulting influx of traffic that a development of this size will create.

If the development at Lidsing goes ahead it will link into the 450 houses already approved at the adjacent Gibraltar Farm site. There are already 89 houses being built at Gleaming Wood Drive. An application for 650 houses at East Hill which is adjacent to Gibraltar Farm has been submitted (the earlier 800 house proposal is being Appealed). This is a grand total of 3,189 houses being built over the next 18 years meaning 18 years of construction traffic.

**ADDITIONAL PRESSURE ON LOCAL SERVICES**

These developments would put considerable strain on Bredhurst Village, on both Medway and Maidstone's already oversubscribed secondary schools and it would put additional strain on Medway and Maidstone's overstretched Health services.

**DESTRUCTION OF THE AONB**

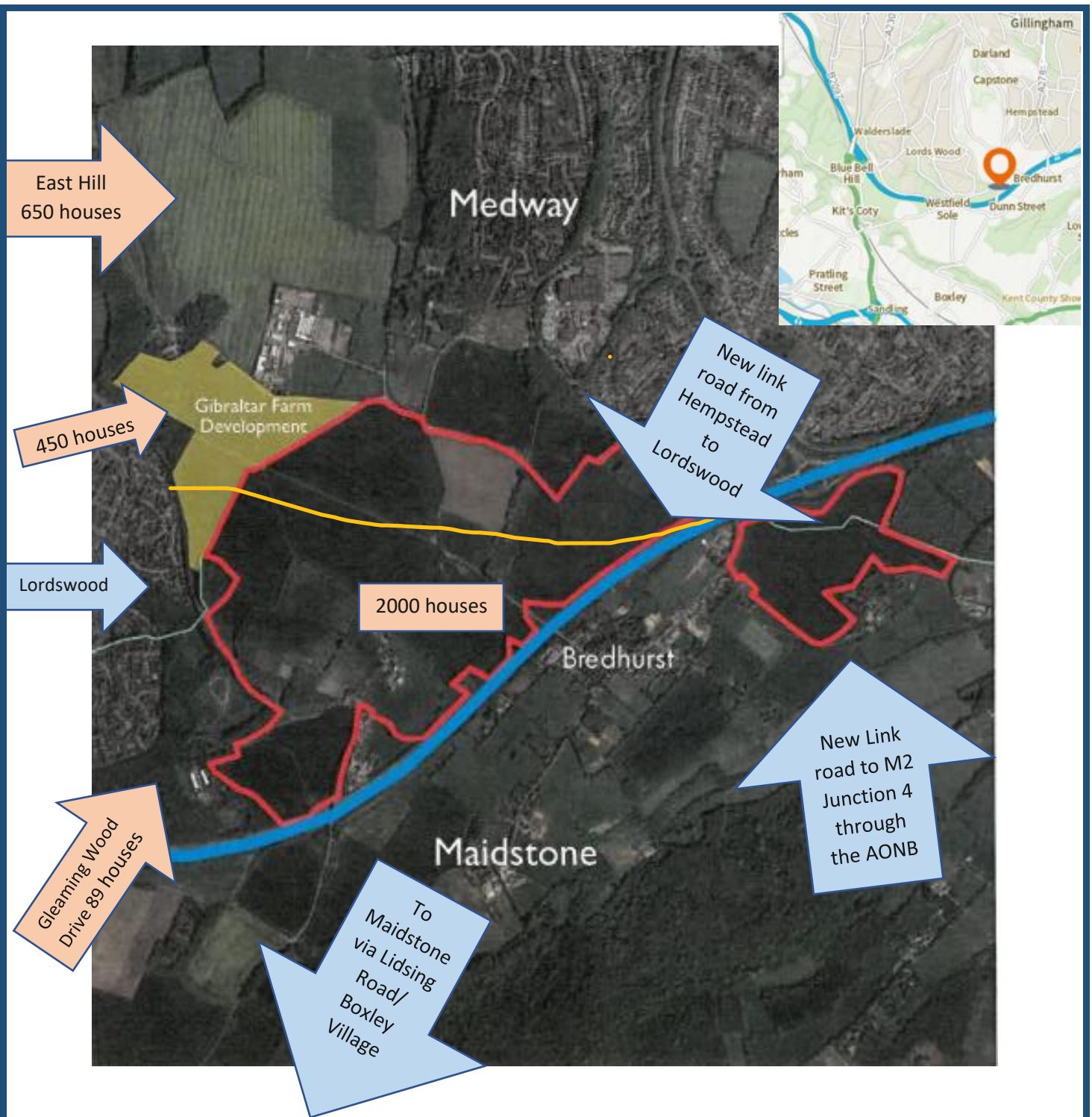
The new access road at M2 Junction 4 would be built directly in the Area of Outstanding Natural Beauty and the development would itself have a negative visual impact on the AONB.

**TRAFFIC CHAOS FOR ALL RESIDENTS IN BOXLEY PARISH**

Are you one of the thousands already affected by the traffic chaos daily in this area? These proposals will make it much worse with an estimated 10-12,000 extra vehicle movements per day predicted from the Lidsing Development!

If even part of this traffic feeds through to Boxley village or Walderslade Woods Road it would cause enormous problems with already congested local roads.

**3,189 new houses = increasing congestion over the next 18 years**



## WHAT YOU NEED TO DO TO OBJECT

Consultation information can be accessed on the Local Plan Review website at [www.maidstone.gov.uk](http://www.maidstone.gov.uk) (search for **Local Plan Review – MBC Local Plan**). The reference for Lidsing is **LPRSP4(B)** (Page 60). The Developers plans for all of the above can be viewed in full on the Hume Planning website under Consultations.

Online portal: <https://maidstone.objective.co.uk/kse>

By Email: [ldf@maidstone.gov.uk](mailto:ldf@maidstone.gov.uk)

By Post: Strategic Planning, Maidstone Borough Council, Maidstone House, King Street, Maidstone ME15 6JQ

**A template response to the all important valid planning reasons can be found on the Boxley Parish Council Website or contact the office for a paper or email copy.**